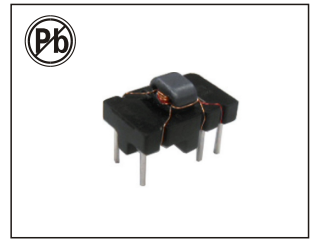


BROADBAND PLC TRANSFORMER

T047DG

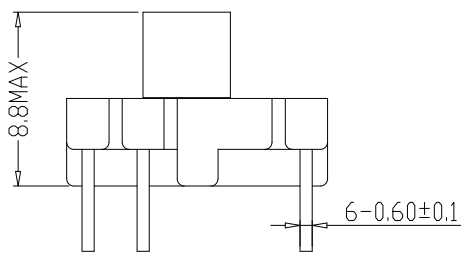


FEATURES:

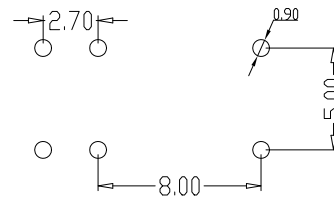
- DESIGN FOR PLC(POWER LINE COMMUNICATION) APPLICATION.
- ROHS COMPLIANT.
- REINFORCED INSULATION
- OPERATING TEMPERATURE RANGE: 0°C TO 70°C.

Electrical Specifications @25°C							
Part Number	Turns Ratio (@100KHz,0.1V)	OCL (@100KHz,0.1V)			DCR(@25°C)		
	6-1:2-5:3-4	6-1	2-5	3-4	6-1	2-5	3-4
	(3.5:4:2)±5%	34.3uH Min	44.8uH Min	11.2uH Min	0.5Ω max	0.5Ω max	0.25Ω max
T047DG	Continue						
	Hi-pot	Insulation resistance 500VDC/1mA	INSERTION LOSS 1-6 To 2-5 (Measure back to back)		INSERTION LOSS 6-1 To 3-4 (Measure back to back)		
	6-1To 2-5,3-4	6-1To 2-5,3-4	2-68MHz		2-68MHz		
	500VDC/1mA/2S	5MΩ Min	-3.0dB Min		-6.0dB Min		

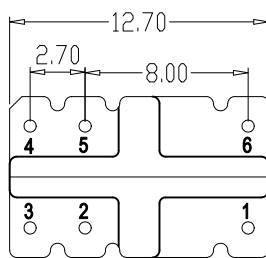
MECHANICAL DIMENSIONS(unit:mm)



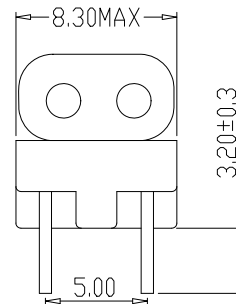
Front View



Recommend PAD layout



Bottom View



● Unless otherwise specified all tolerances are:±0.25mm

SCHEMATIC

