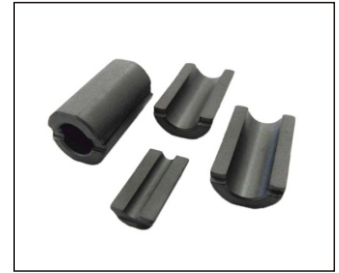
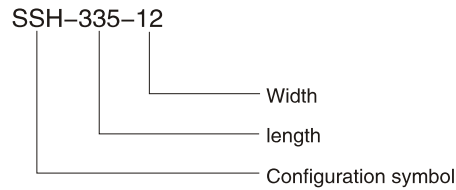
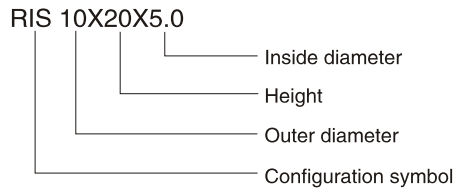


## SPLIT SLEEVE CORES(RIS,SSH)

Ordering code



### CONFIGURATIONS(mm)

Fig1

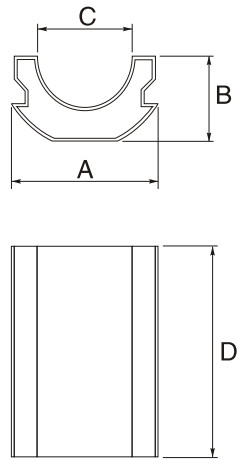
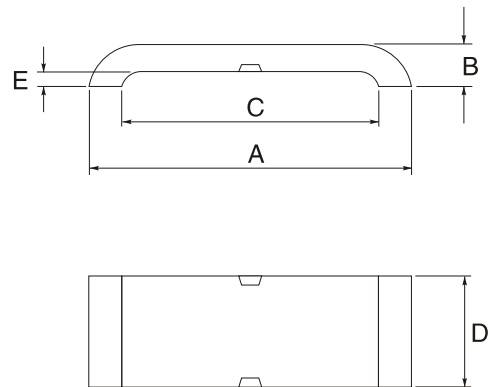


Fig2



### DIMENSION OF MAIN PRODUCTIONS & IMPEDANCE@25°C

Part No.	Fig.	A	B	C	D	E
RIS 10X20X5	1	10±0.3	4.8±0.2	5.0+0.4/-0.2	20±0.5	/
RIS 10X10X20X5H	1	10±0.3	5.15±0.2	5.2±0.3	20±0.5	/
RIS 13.5X13.5X28X6.5H	1	13.5+0.4/-0.3	6.75±0.3	6.5±0.3	28±0.6	/
RIS 14X28X7	1	14±0.4	7±0.3	7±0.3	28±0.6	/
RIS 16X28X9	1	16±0.4	8±0.3	9±0.4	28±0.6	/
RIS 16X16X28X9H	1	16±0.4	8±0.3	9±0.4	28±0.6	/
RIS 18X28X10	1	18±0.4	9±0.3	10±0.4	28±0.6	/
RIS 22X28X11	1	22±0.4	11±0.3	11±0.4	28±0.6	/
RIS 25X28X14	1	25±0.5	12.5±0.3	14±0.4	28±0.8	/
SSH-335-12	2	33.5±1	3.45±0.2	27±0.8	12±0.4	0.4+0.4/-0.1
SSH-335-20	2	33.5±1	3.45±0.2	27±0.8	20±0.5	0.8+0.4/-0.1
SSH-40-12	2	40±1	3.45±0.2	35±0.8	12±0.4	0.6+0.4/-0.1
SSH-45-12	2	45.2±1.2	3.45±0.2	40±0.8	12±0.4	0.6+0.4/-0.1

Remarks: Other sizes are available upon request if your needs not listed in the catalog